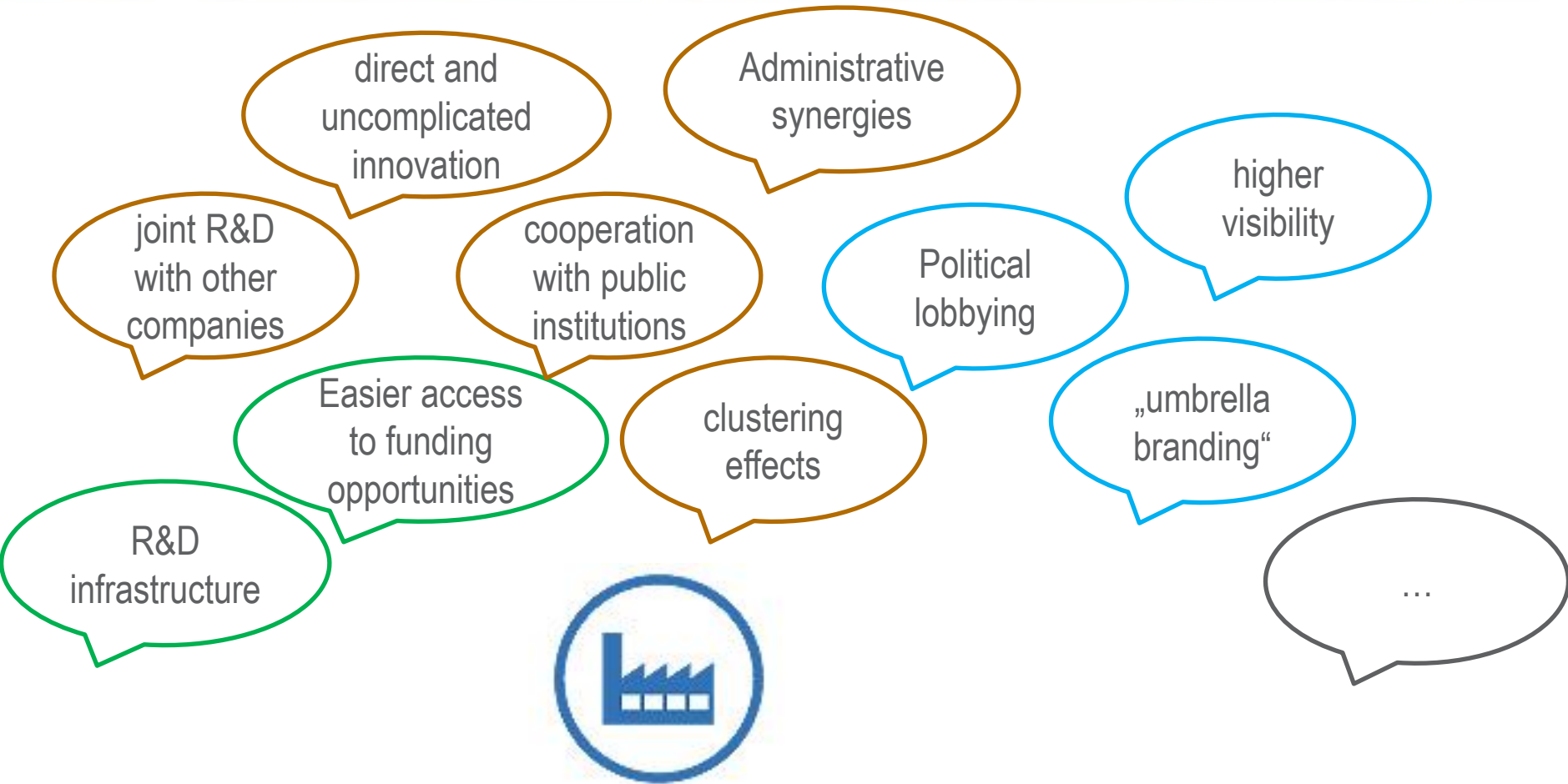


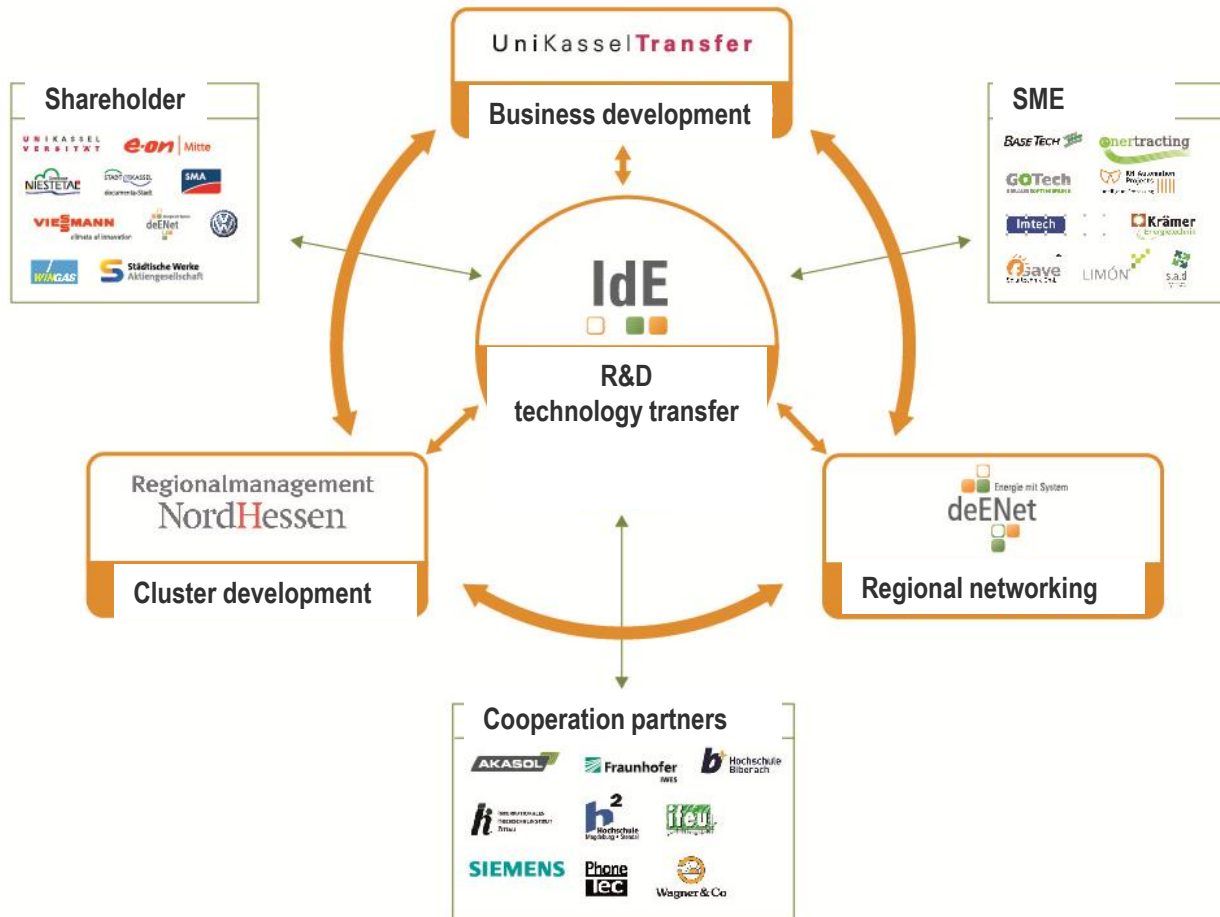
IdE Institute decentralised Energy Technologies - added value for industrial & entrepreneurial stakeholders

Eschborn, Mar. 4th 2014

Jan Kallok – Program manager



IdE is a PPP, initiated by the private sector of our cluster, to set up a strategic co-operation together with the public and the research sector in the field of renewable energy and energy efficiency.





U N I K A S S E L
V E R S I T Ä T



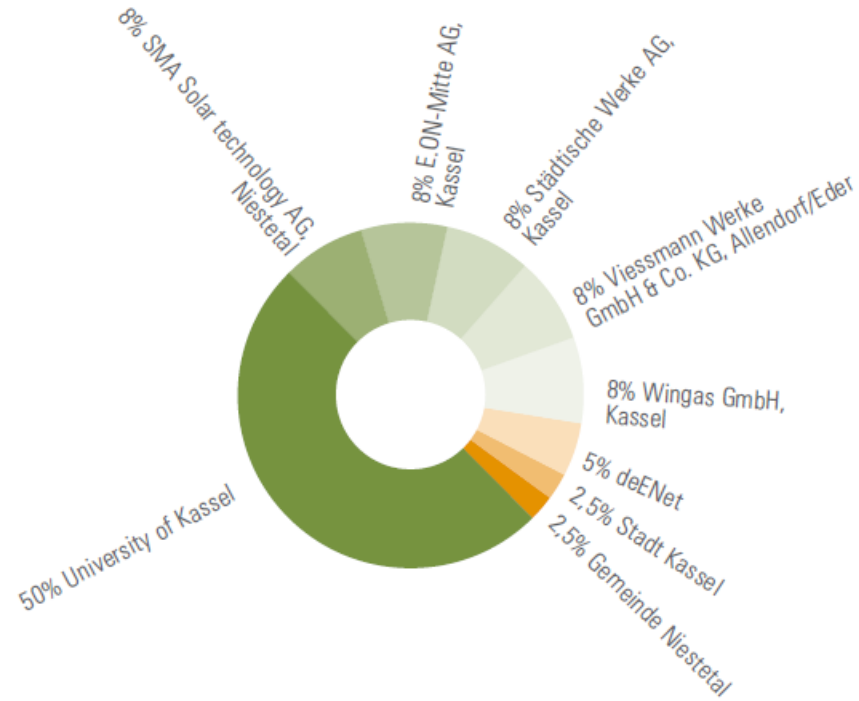
documenta-Stadt

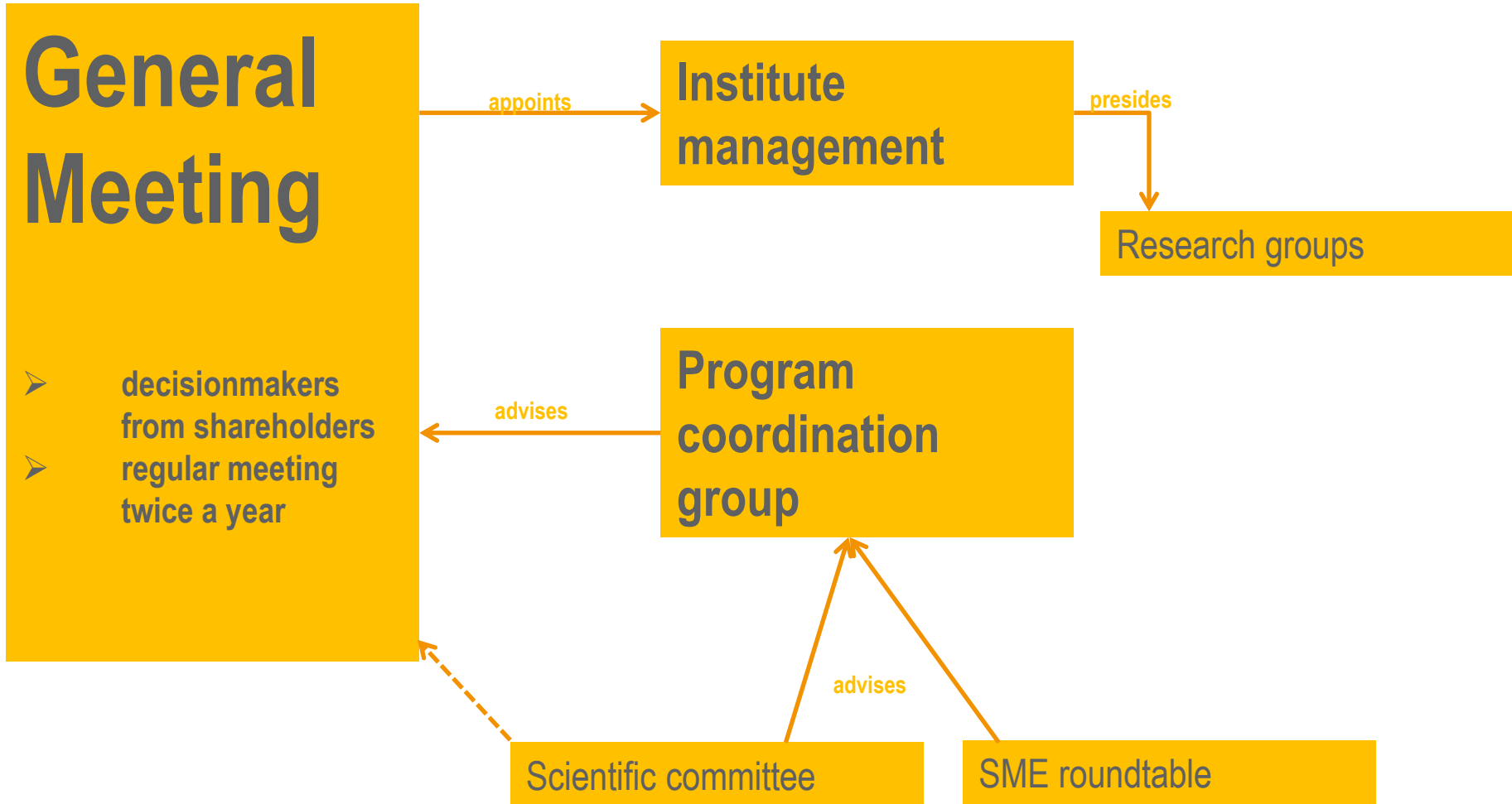


Shareholders



Volkswagen AG is tightly integrated in the structures as part of a separate cooperation agreement and is a regular guest at the shareholders' general meeting.





Decision process inside IdE:

General Meeting

takes strategic decisions

Program Coordination Group

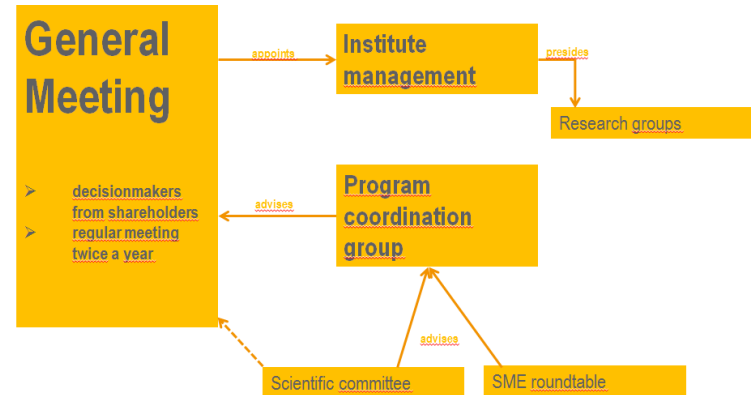
unites public, private and research shareholders
develops joint project initiatives on working level
meets 4 times a year

Scientific committee

discusses and prepares scientific input to PCG
meets 4 times a year prior to CG

SME roundtable

evaluates SME
meets twice a year



Background:

- decentralization of energy supply in Germany
- „(re-)communalization“ of energy infrastructure
- new business fields for energy companies with a high R&D potential

Participating in IdE means...

Private sector

access to funding (know-how)

access to R&D infrastructure

access to scientific know-how

contact/ communication platform

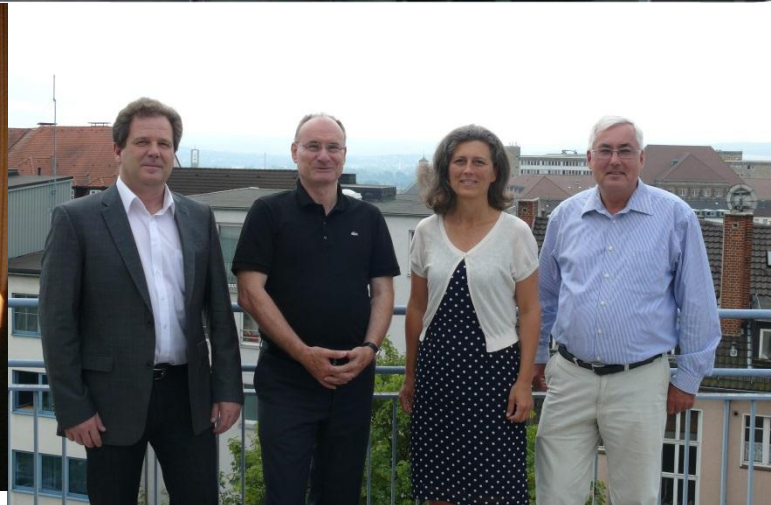
enhanced publicity

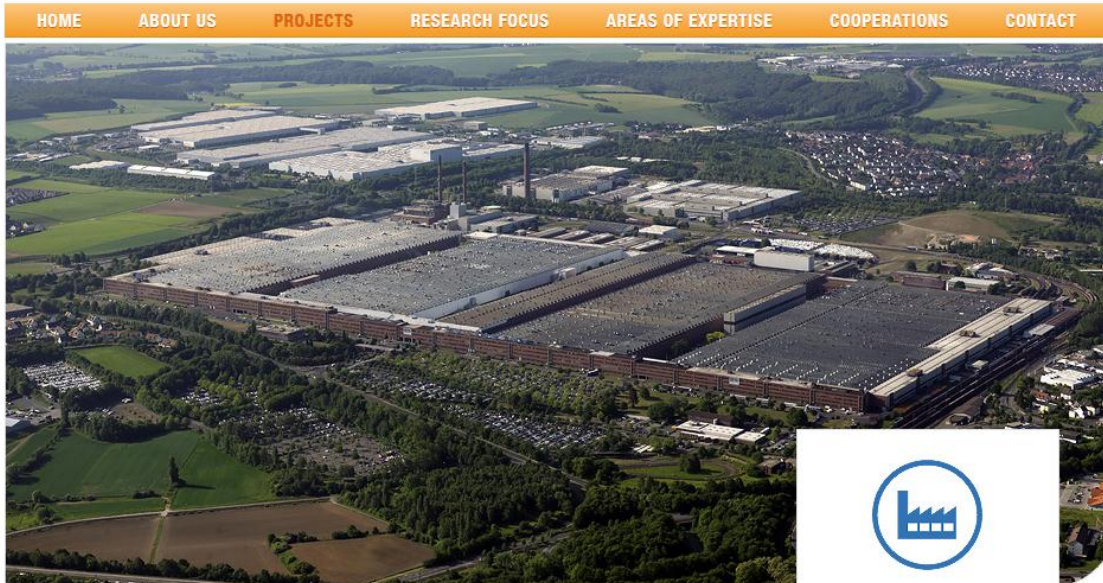
direct contact to political level

...

active part in IdE bodies

financial contribution





BLUE FACTORY

Scope of Project

The VW plant in Kassel aims to reduce its energy consumption by 30% before the end of 2018. Hall 6, which is currently undergoing conversion, will serve as a pilot project. Moreover, hardening processes and forging efficiency potentials must be identified and implemented in the foundry which is the primary consumer. In addition to the production processes, infrastructure technologies, HVAC, cooling and heating, compressed air and lighting products are also subjects of investigation. An energy monitoring system will also be installed in Hall 6 in order to identify the areas of primary consumption and derive energy saving measures from this.

CONTACT PERSON
 Prof. Dr.-Ing. Jens Hesselbach
 Chairman Scientific Director
 Production & Energy
 +49 (0)561-804-3179
 hesselbach(at)uni-kassel.de
 Profil

CLIENT



>> CLOSED PROJECTS

- pinta: Pervasive energy through internet-based telecommunications services
 - **About:** Smart offices with low energy use – pinta develops innovative energy management systems for ICT devices
 - **Shareholders:** E.ON Mitte, University Kassel, Siemens, City of Bruchköbel
 - **Funding:** Federal Ministry of Economics and Technology (3 Mio €)
 - **Duration:** 2011–2014
 - **Web:** www.pinta-it2green.de



aufgrund eines Beschlusses
des Deutschen Bundestages





Thank you for your kind attention.

IdE Institut dezentrale Energietechnologien

Ständeplatz 15
D-34117 Kassel

Tel.: +49 (0) 561 788 096-10
Fax: +49 (0) 561 788 096-22

E-Mail: info@ide-kassel.de
Internet: www.ide-kassel.de

Gefördert durch:

HESSEN



Hessisches Ministerium
für Wirtschaft, Verkehr
und Landesentwicklung



EUROPÄISCHE UNION:
Investition in Ihre Zukunft
– Europäischer Fonds
für regionale Entwicklung.